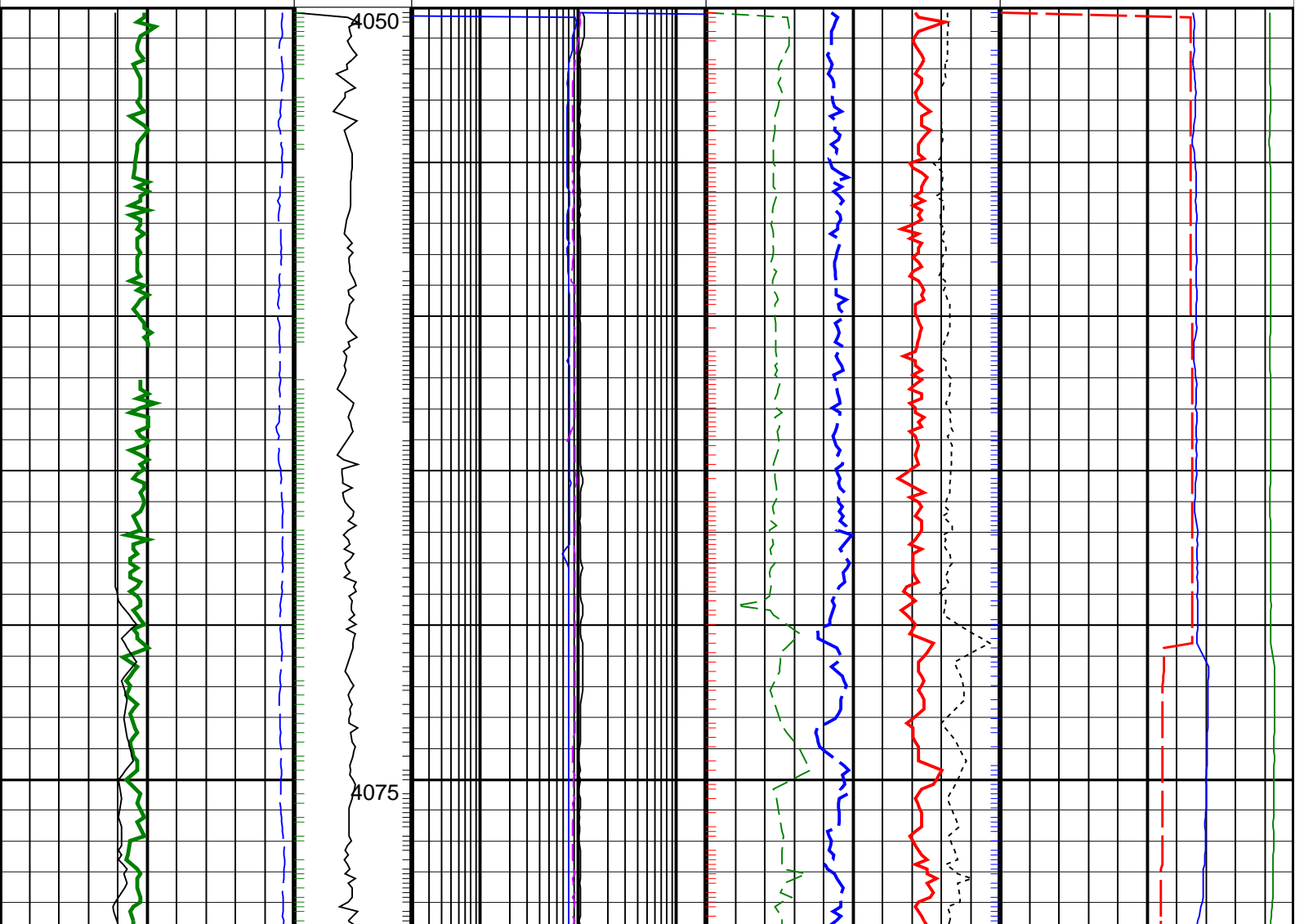
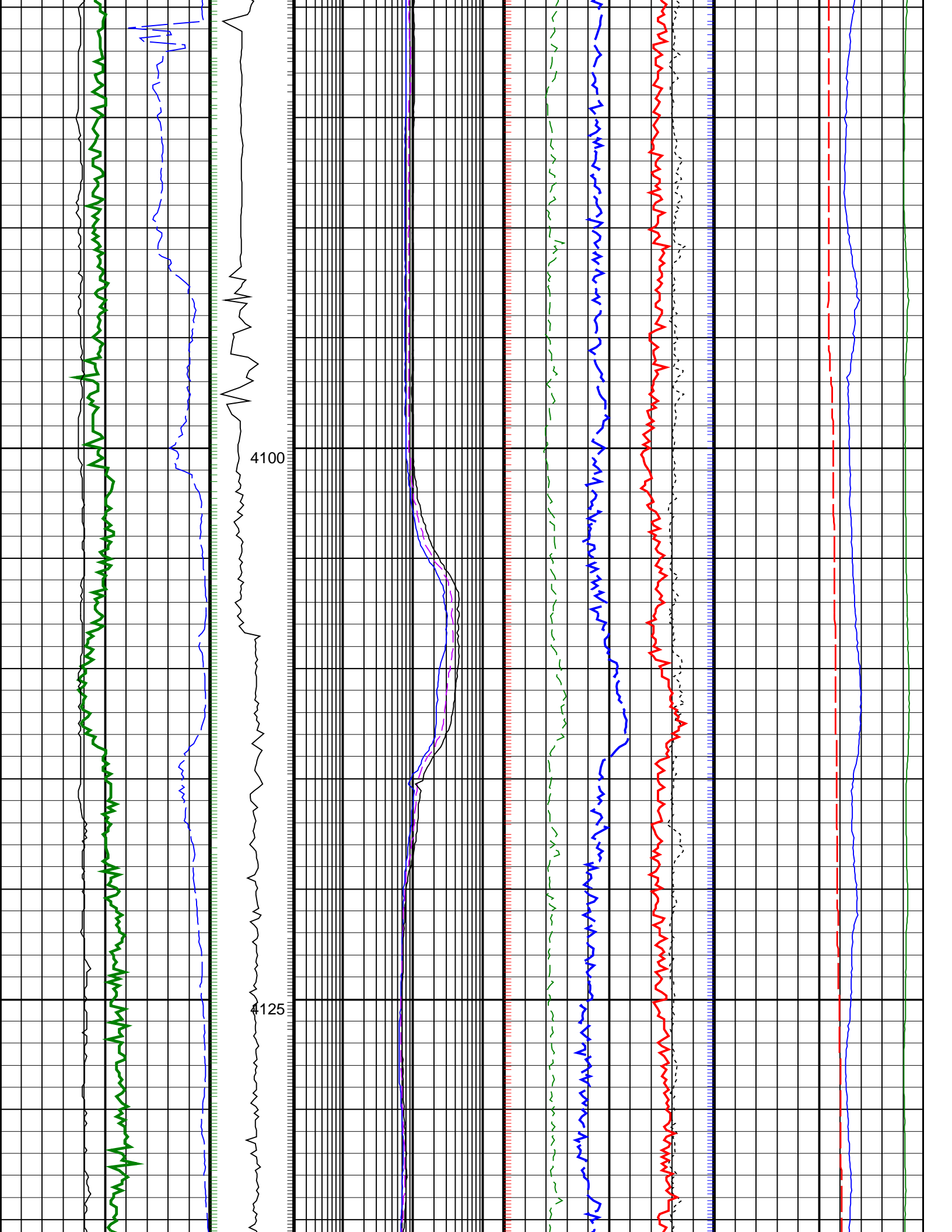


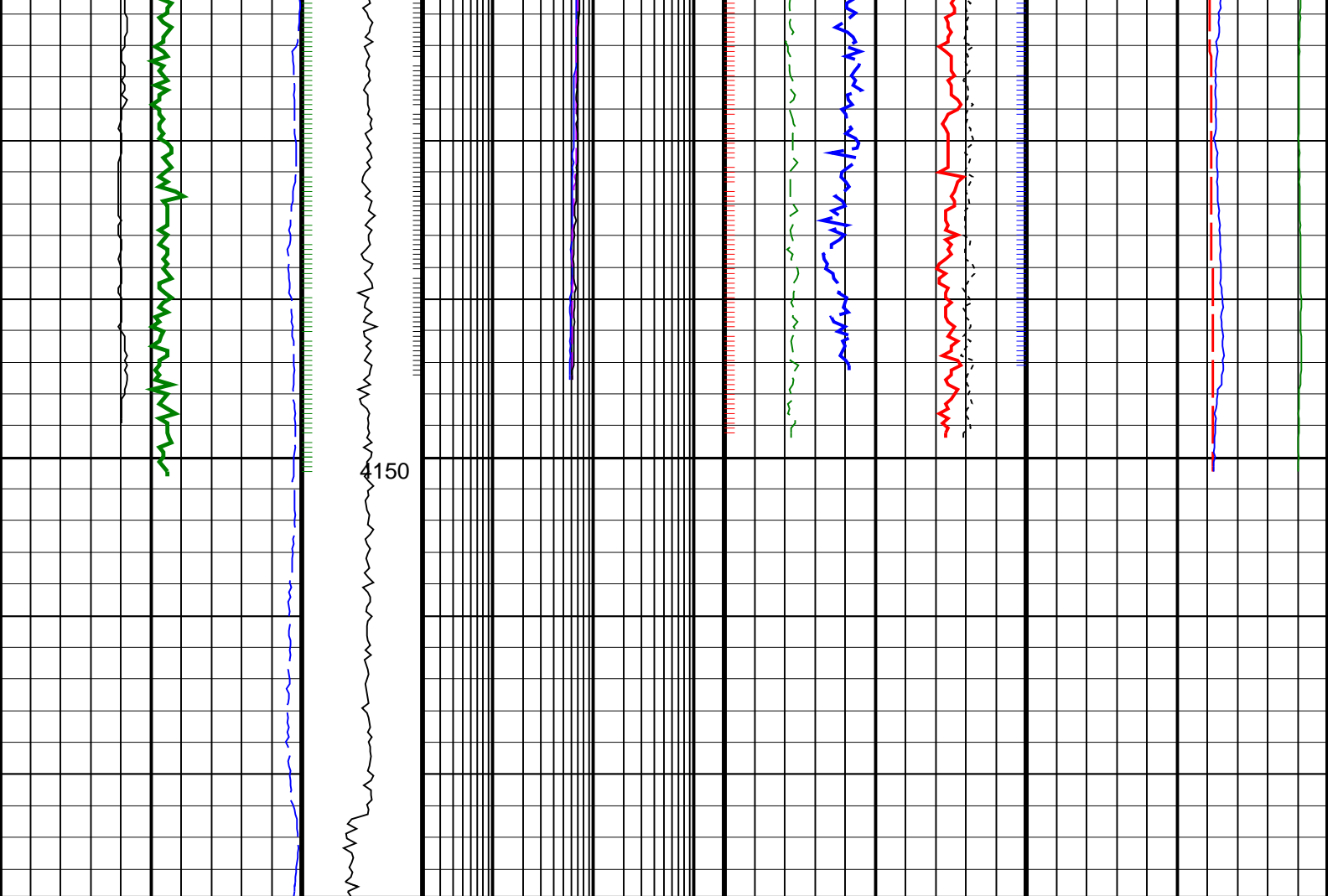
PIP SUMMARY

- Density Samples +
- Gamma Ray Samples +
- Resistivity Samples +
- Neutron Samples +

<p>Gamma Ray, Average, Real-Time, Computed Downhole (GRMA_DH_ECO_RT) 0 (GAPI) 200</p>		<p>ARC Phase Shift Resistivity 40 inch at 2 MHz, Real-Time (P40H_ECO_RT) 0.2 (OHMM) 200</p>	<p>Thermal Neutron Porosity, Average, Real-Time (TNPH_ECO_RT) 45 (PU) -15 10</p>	<p>Equivalent Circulating Density, Real-Time (ECD_ECO_RT) 0 (LB/G) 15</p>
<p>Ultrasonic Caliper, Average Diameter, Real-Time, Computed Downhole (UCAV_DH_ECO_RT) 6 (IN) 16</p>		<p>ARC Phase Shift Resistivity 28 inch at 2 MHz, Real-Time (P28H_ECO_RT) 0.2 (OHMM) 200</p>	<p>Photoelectric Factor, Bottom, Real-Time, Computed Downhole (PEB_DH_ECO_RT) 0 (-10) 10</p> <p>Bulk Density Correction, Bottom, Real-Time Computed Downhole (DRHB_DH_ECO_RT) (G/C3) -0.25 0.25</p>	<p>Downhole Annulus Pressure, Real Time, Computed Downhole (DHAP_DH_ECO_RT) 0 (PSI) 6000</p>
<p>ROP*5 (ROP5) 200 (M/HR) 0</p>	<p>MWD Collar RPM (CRPM_RT) (RPM) 0 400</p>	<p>ARC Phase Shift Resistivity 16 inch at 2 MHz, Real-Time (P16H_ECO_RT) 0.2 (OHMM) 200</p>	<p>Bulk Density, Bottom, Real-Time, Computed Downhole (ROBB_DH_ECO_RT) 1.85 (G/C3) 2.85</p>	<p>Downhole Annulus Temperature, Real Time, Computed Downhole (DHAT_DH_ECO_RT) 0 (DEGC) 200</p>







<p>ROP*5 (ROP5) 200 (M/HR) 0</p>	<p>MWD Collar RPM (CRPM_RT) (RPM) 0 400</p>	<p>ARC Phase Shift Resistivity 16 inch at 2 MHz, Real-Time (P16H_ECO_RT) 0.2 (OHMM) 200</p>	<p>Bulk Density, Bottom, Real-Time, Computed Downhole (ROBB_DH_ECO_RT) 1.85 (G/C3) 2.85</p>	<p>Downhole Annulus Temperature, Real Time, Computed Downhole (DHAT_DH_ECO_RT) 0 (DEGC) 200</p>
<p>Ultrasonic Caliper, Average Diameter, Real-Time, Computed Downhole (UCAV_DH_ECO_RT) 6 (IN) 16</p>		<p>ARC Phase Shift Resistivity 28 inch at 2 MHz, Real-Time (P28H_ECO_RT) 0.2 (OHMM) 200</p>	<p>Photoelectric Factor, Bottom, Real-Time, Computed Downhole (PEB_DH_ECO_RT) 0 (----) 10</p> <p>Bulk Density Correction, Bottom, Real-Time Computed Downhole (DRHB_DH_ECO_RT) (G/C3) -0.25 0.25</p>	<p>Downhole Annulus Pressure, Real Time, Computed Downhole (DHAP_DH_ECO_RT) 0 (PSI) 6000</p>
<p>Gamma Ray, Average, Real-Time, Computed Downhole (GRMA_DH_ECO_RT) 0 (GAPI) 200</p>		<p>ARC Phase Shift Resistivity 40 inch at 2 MHz, Real-Time (P40H_ECO_RT) 0.2 (OHMM) 200</p>	<p>Thermal Neutron Porosity, Average, Real-Time (TNPH_ECO_RT) 45 (PU) -15</p>	<p>Equivalent Circulating Density, Real-Time (ECD_ECO_RT) 10 (LB/G) 15</p>

PIP SUMMARY

- Density Samples †
- † Gamma Ray Samples
- † Resistivity Samples
- Neutron Samples †